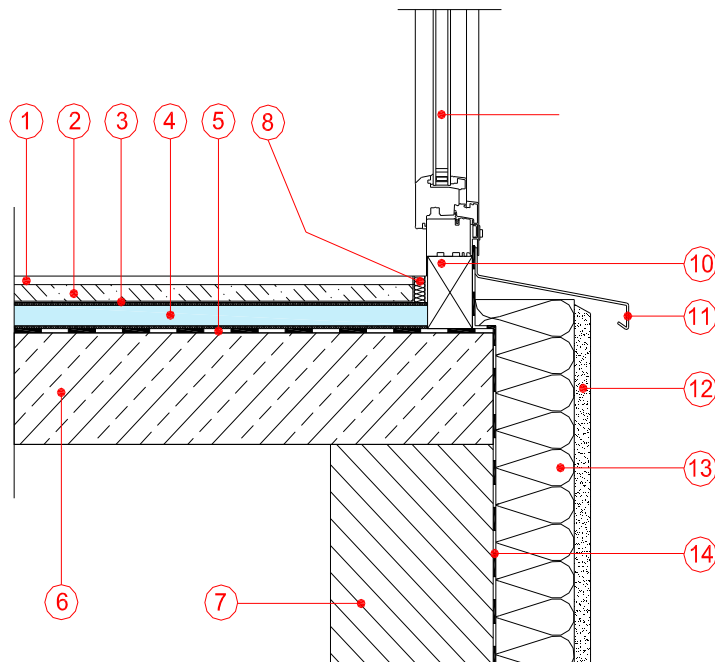


Product – Vacupor® RP2-B2 or Vacupor® NT

Insulation to Ground Floor – Floating Floor

- | | |
|----------------------------------|-----------------------|
| 1 – Final Floor Covering | 8 – Edge Insulation |
| 2 – ‘Floating’ Chipboard | 9 – Window |
| 3 – Separation Layer | 10 – Supporting Frame |
| 4 – Vacupor® RP2-B2 or Vacuspeed | 11 – Window Cill |
| 5 – Vapour Barrier | 12 – Render System |
| 6 – Concrete | 13 – Insulation |
| 7 – Blockwork | 14 – Vapour Barrier |



The sketches above and their related descriptions are typical representations only. All designs must be carried out for a specific project and should be cleared by the final client or their representatives with either Building Control or the relevant authorities.

For Further Information Contact:

Vacutherm Ltd, Brayton Domain,
Aspatria, Wigton,
Cumbria, CA7 2BD
Email: office@vacutherm.co.uk
Web: www.vacutherm.co.uk