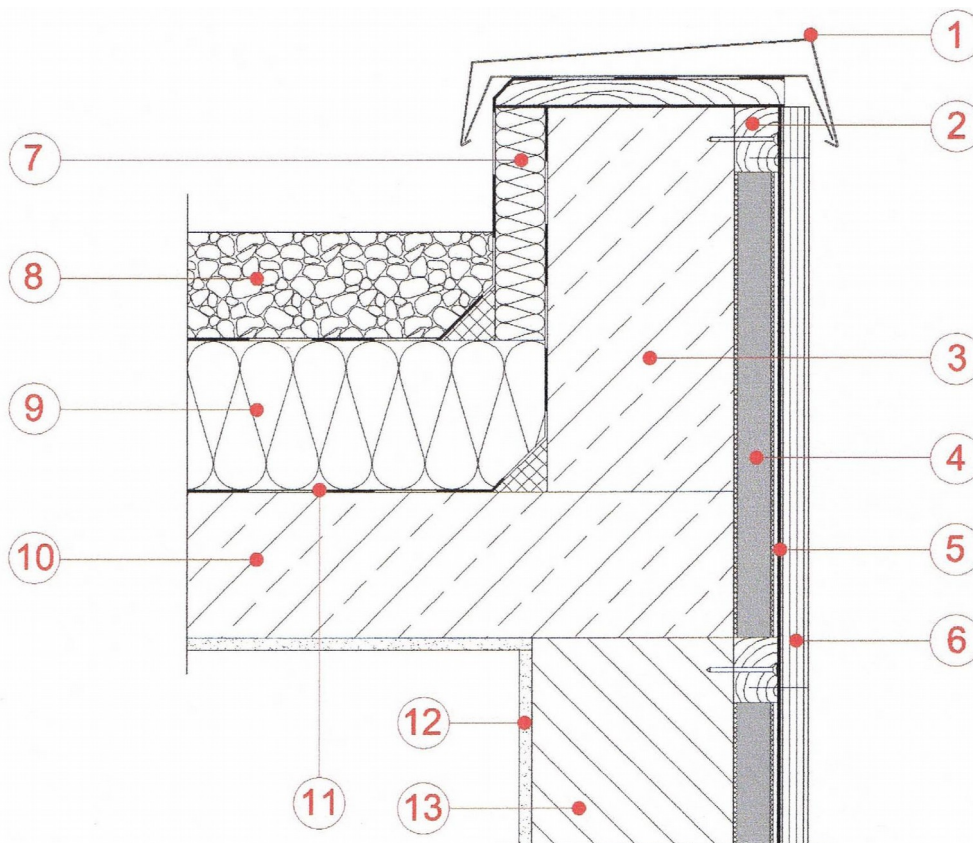


## **Product – Vacupor® RP2-B2**

### **Insulation for Wall Insulation With Flat Roof**

- |                       |                     |
|-----------------------|---------------------|
| 1 – Capping Sheet     | 8 – Pebble Deck     |
| 2 – Timber Batten     | 9 – Roof Insulation |
| 3 – Ring Beam         | 10 – Concrete       |
| 4 – Vacupor® RP2-B2   | 11 – Sealing Layer  |
| 5 – Breather Membrane | 12 – Plaster Board  |
| 6 – Rain Screen       | 13 – Blockwork      |
| 7 – Edge Insulation   |                     |



The sketches above and their related descriptions are typical representations only. All designs must be carried out for a specific project and should be cleared by the final client or their representatives with either Building Control or the relevant authorities.

#### **For Further Information Contact:**

Vacutherm Ltd, Brayton Domain,  
Aspatria, Wigton,  
Cumbria, CA7 2BD  
Email : [office@vacutherm.co.uk](mailto:office@vacutherm.co.uk)  
Web: [www.vacutherm.co.uk](http://www.vacutherm.co.uk)