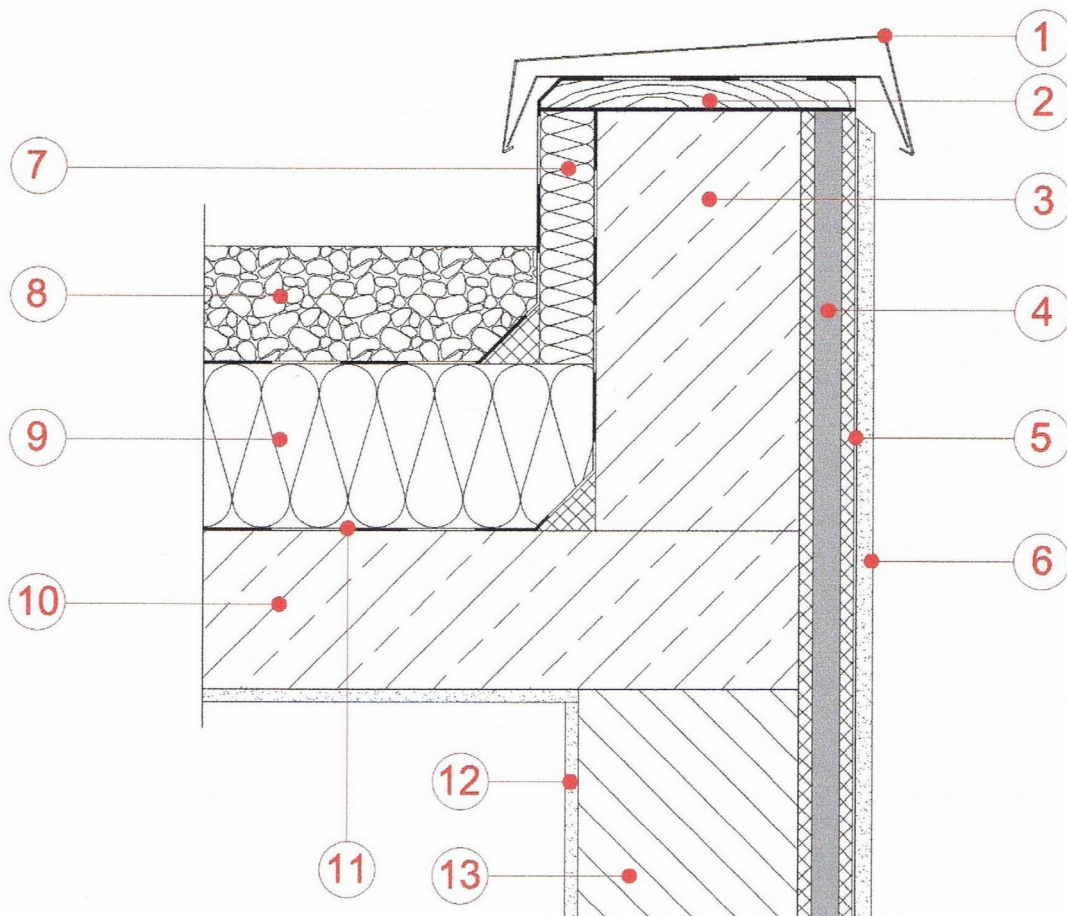


Product – Vacupor® PS-B2

Insulation for External Insulation

- | | |
|--------------------------|---------------------|
| 1 – Capping Sheet | 8 – Pebble Deck |
| 2 – Timber Capping Plate | 9 – Roof Insulation |
| 3 – Ring Beam | 10 – Concrete |
| 4 – Vacupor® PS-B2 | 11 – Sealing Layer |
| 5 – Reinforcement Layer | 12 – Plaster Board |
| 6 – Render | 13 – Blockwork |
| 7 – Edge Insulation | |



The sketches above and their related descriptions are typical representations only. All designs must be carried out for a specific project and should be cleared by the final client or their representatives with either Building Control or the relevant authorities.

For Further Information Contact:

Vacutherm Ltd, Brayton Domain,
Aspatria, Wigton,
Cumbria, CA7 2BD
Email: office@vacutherm.co.uk
Web: www.vacutherm.co.uk