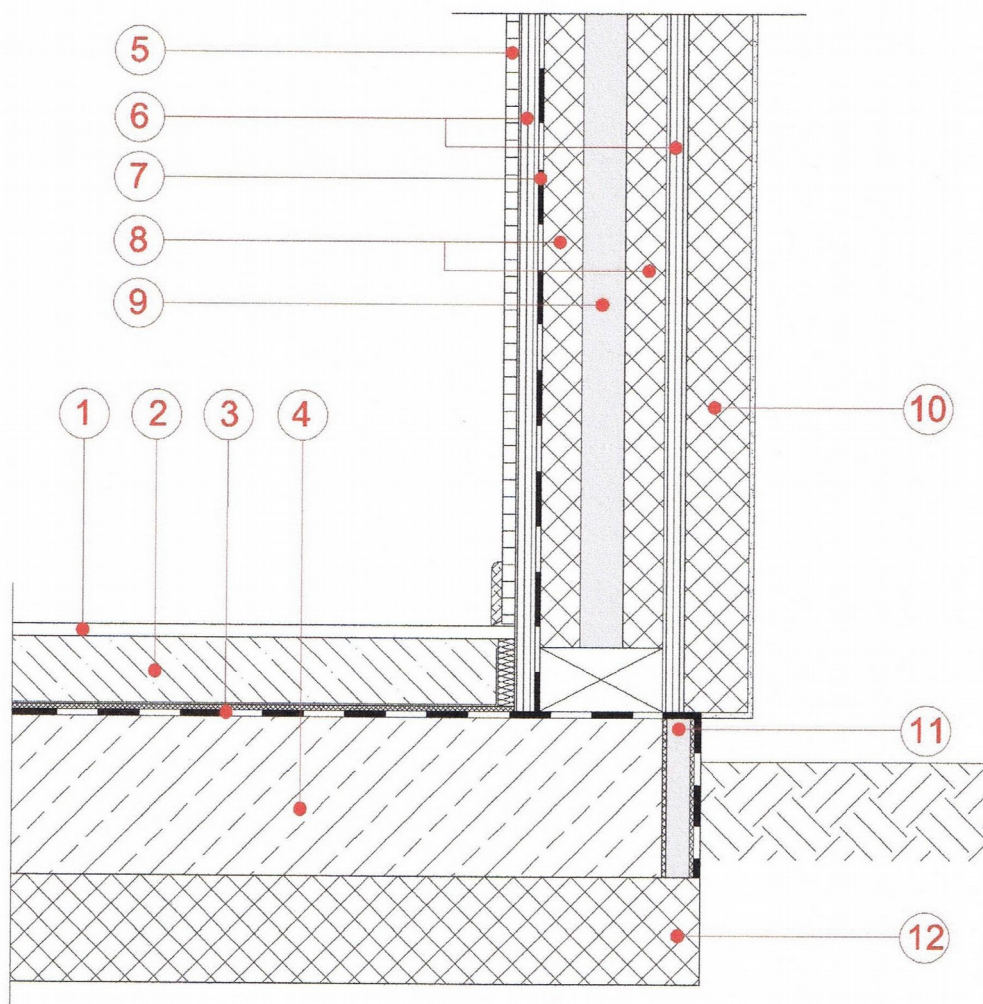


## **Product – Vacupor® NT-B2 or Vacuspeed**

### **Insulation With Timber Frame**

- |                         |                                      |
|-------------------------|--------------------------------------|
| 1 – Floor Covering      | 7 – Vapour Barrier                   |
| 2 – Screed              | 8 – Timber Studding                  |
| 3 – Sealing Layer       | 9 – Vacupor® NT-B2                   |
| 4 – Concrete or Similar | 10 – Insulated Render System         |
| 5 – Plaster Board       | 11 – Edge Insulation Vacupor® RP2-B2 |
| 6 – OSB or Chipboard    | 12 – Base / Blinding Layer           |



The sketches above and their related descriptions are typical representations only. All designs must be carried out for a specific project and should be cleared by the final client or their representatives with either Building Control or the relevant authorities.

#### **For Further Information Contact:**

Vacutherm Ltd, Brayton Domain,  
Aspatria, Wigton,  
Cumbria, CA7 2BD  
Email: [office@vacutherm.co.uk](mailto:office@vacutherm.co.uk)  
Web: [www.vacutherm.co.uk](http://www.vacutherm.co.uk)