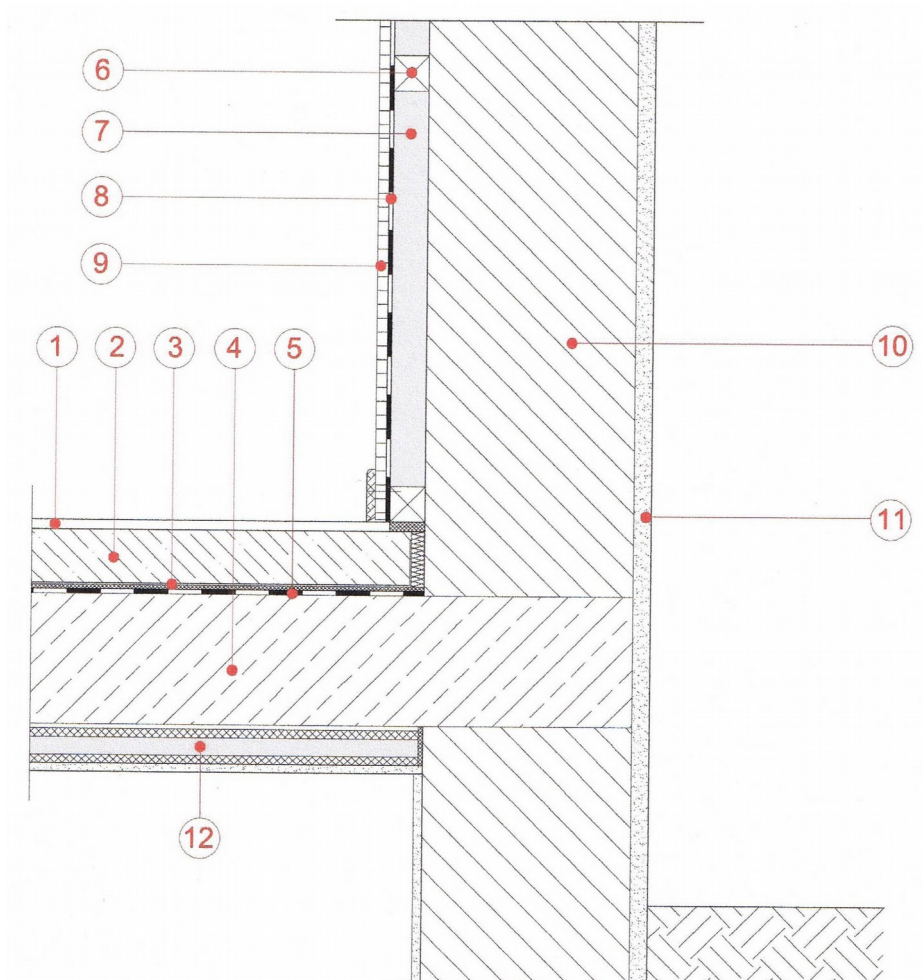


Product – Vacupor® NT-B2 or Vacuspeed

Inside Insulation on Outer Wall

- | | |
|-------------------------|--|
| 1 – Floor Covering | 7 – Vacupor® NT-B2 |
| 2 – Screed | 8 – Vapour Barrier / Breather Membrane |
| 3 – Sound Absorption | 9 – Plaster Board |
| 4 – Concrete or Similar | 10 – Block Work |
| 5 – Sealing Layer | 11 – Render |
| 6 – Timber Battening | 12 – Cellar Board Vacupor® PS-B2 |



The sketches above and their related descriptions are typical representations only. All designs must be carried out for a specific project and should be cleared by the final client or their representatives with either Building Control or the relevant authorities.

For Further Information Contact:

Vacutherm Ltd, Brayton Domain,
Aspatria, Wigton,
Cumbria, CA7 2BD
Email: office@vacutherm.co.uk
Web: www.vacutherm.co.uk