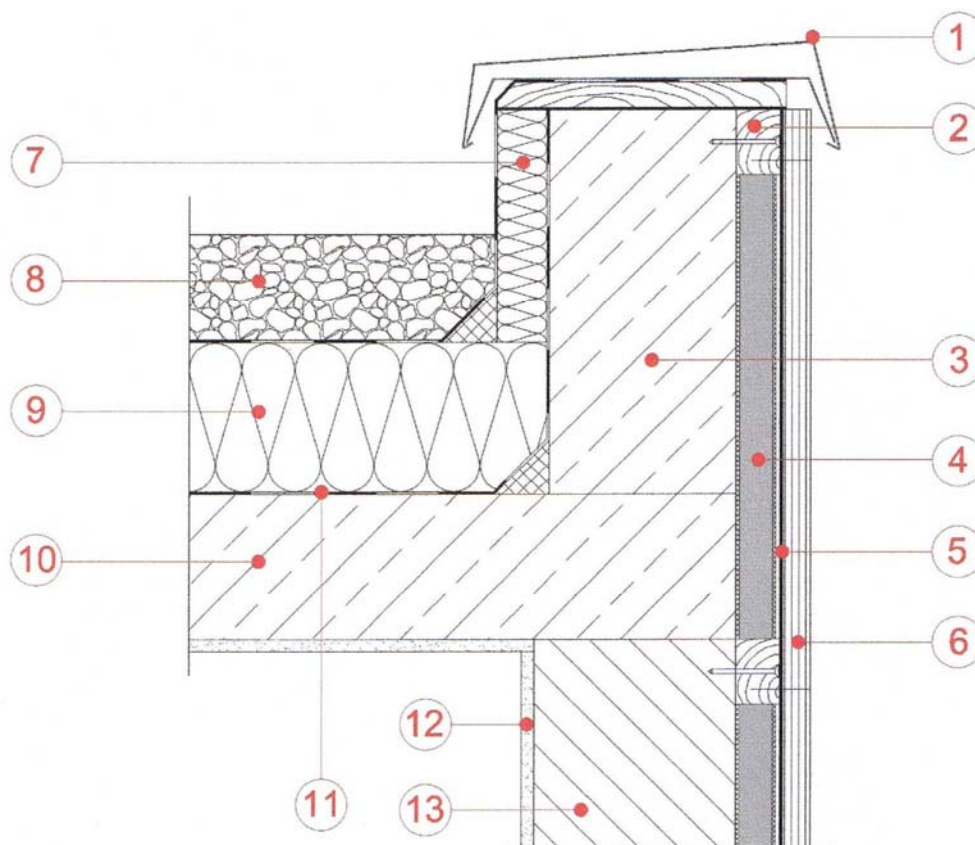


## Product – Vacupor<sup>®</sup> RP2-B2

### Insulation for Wall Insulation With Flat Roof

- |                                 |                     |
|---------------------------------|---------------------|
| 1 – Capping Sheet               | 8 – Pebble Deck     |
| 2 – Timber Batten               | 9 – Roof Insulation |
| 3 – Ring Beam                   | 10 – Concrete       |
| 4 – Vacupor <sup>®</sup> RP2-B2 | 11 – Sealing Layer  |
| 5 – Breather Membrane           | 12 – Plaster Board  |
| 6 – Rain Screen                 | 13 – Blockwork      |
| 7 – Edge Insulation             |                     |



The sketches above and their related descriptions are typical representations only. All designs must be carried out for a specific project and should be cleared by the final client or their representatives with either Building Control or the relevant authorities.

#### **For Further Information Contact:**

EnviroHomes Ltd, Blyth CEC  
Ridley St, Blyth. NE24 3AG.  
Tel: 01670 542857  
Fax: 01670 542898  
Email: [enquiry@envirohomes.co.uk](mailto:enquiry@envirohomes.co.uk)  
Web: [www.envirohomes.co.uk](http://www.envirohomes.co.uk)